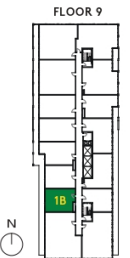
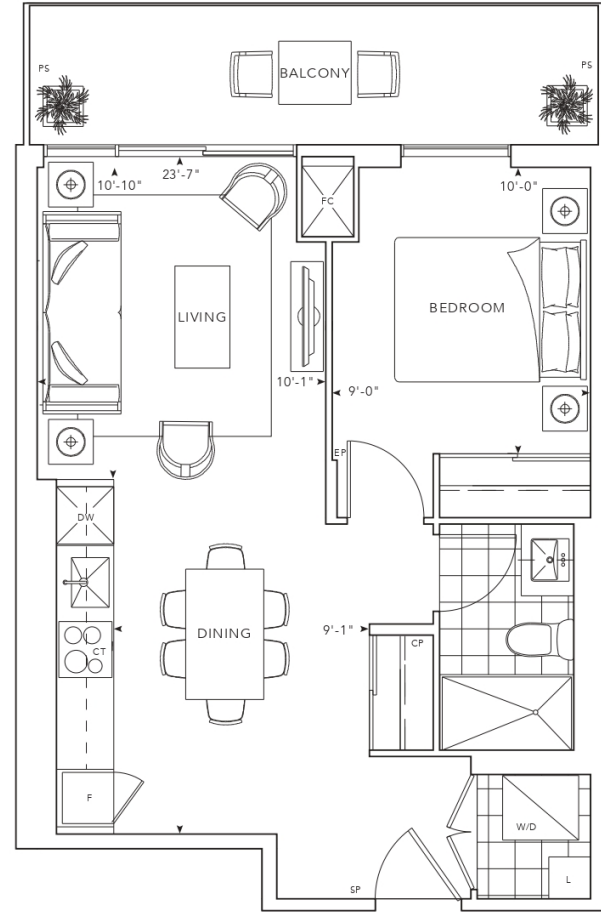


# 1 B

**516 SQ.FT.**  
1 Bedroom  
1 Bathroom

**FLOORS 9 - 12, PH**

**VIEW West**



©Tritel 2020. Tritel, Tritel Design, Tritel Built for Life and Tritel Built for Life Design are registered trademarks of Tritel Corporation. Project names and logos are Trademarks of their respective owners. All rights reserved. Buildings and views not to scale. All dimensions are approximate and subject to normal construction variances. Dimensions may exceed the usable floor area. Sites and specifications subject to change without notice. Actual usable floor space may vary from the stated floor area. Furniture is displayed for illustration purposes only and does not necessarily reflect the electrical plan for the suite. Suites are sold unfurnished. Balcony, terrace and facade variations may apply, contact a sales representative for further details. Illustrations are an artist's concept only. Prices and specifications subject to change without notice. E.80 E, 5 September 2020.

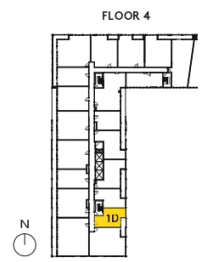
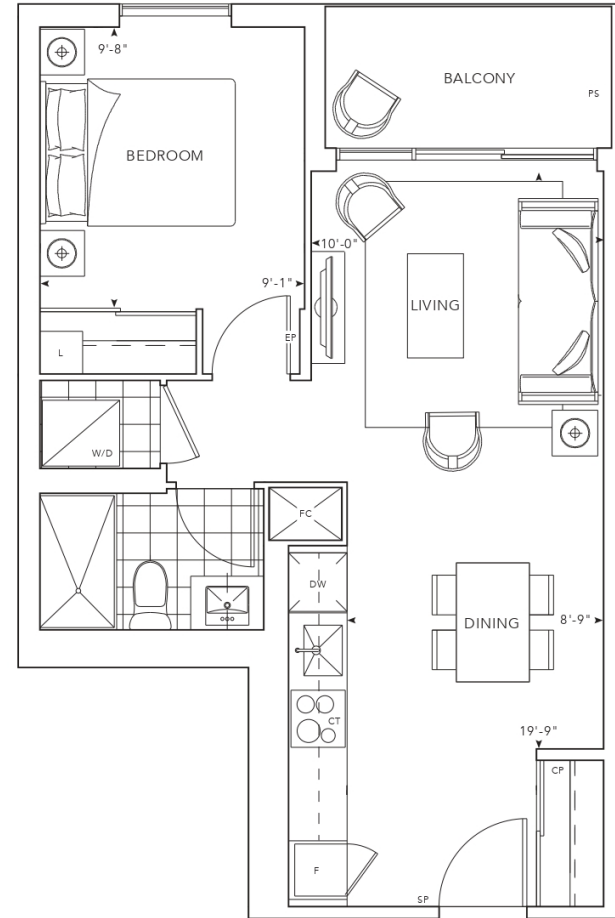
# 1 D —

**523 SQ.FT.**

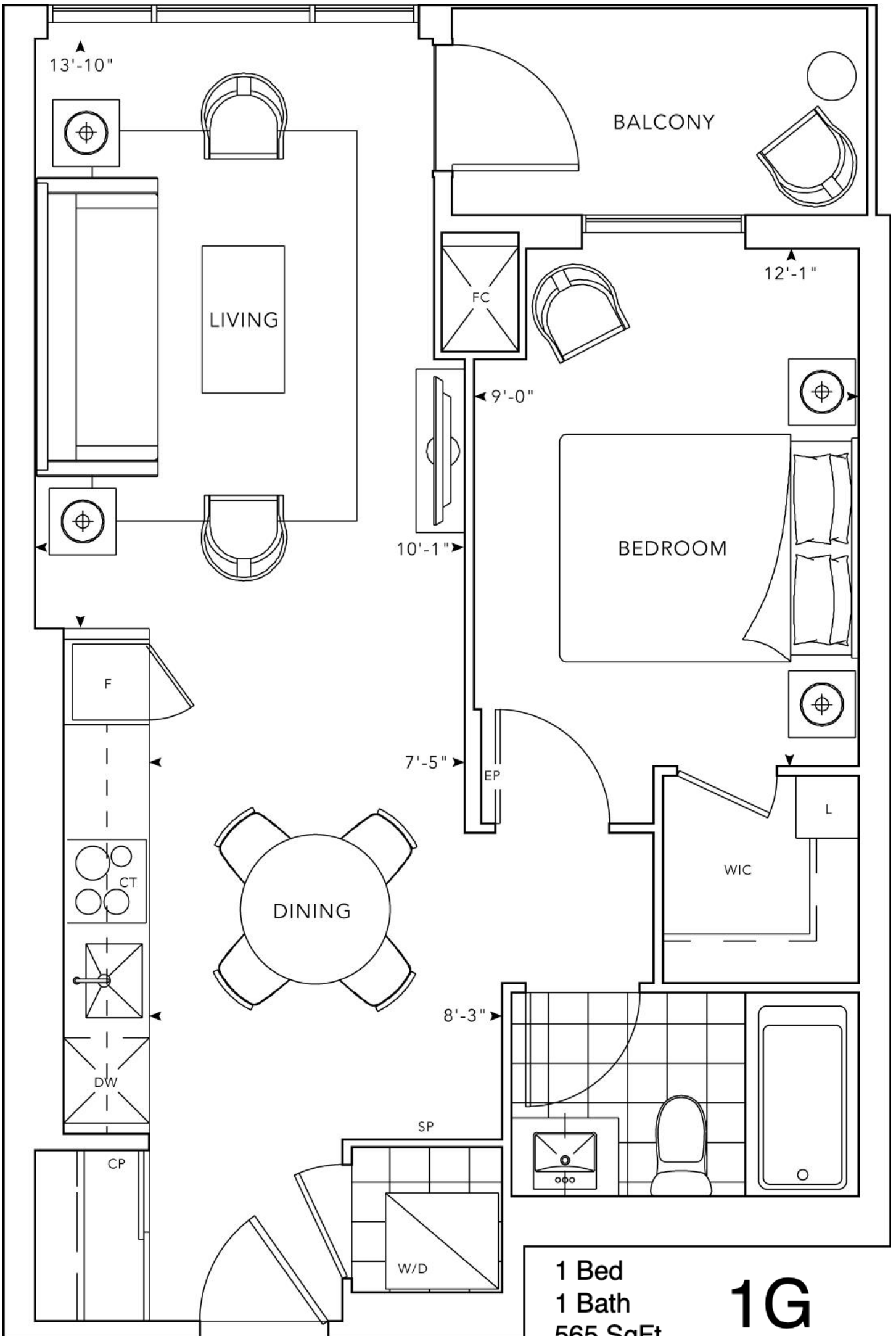
**1 Bedroom  
1 Bathroom**

**FLOORS 4 - 7**

**VIEW East**



©Tritel 2020. "Tritel", "D" design, "Tritel Built for Life" and "Tritel Built for Life Design" are registered Trademarks of Tritel Corporation. Project names and logos are Trademarks of their respective owners. All rights reserved. Buildings and views not to scale. All dimensions are approximate and subject to normal construction variances. Dimensions may exceed the usable floor area. Sites and specifications subject to change without notice. Actual usable floor space may vary from the stated floor area. Furniture is displayed for illustration purposes only and does not necessarily reflect the electrical plan for the suite. Suites are sold unfurnished. Balcony fence and facade variations may apply, contact a sales representative for further details. Illustrations are an artist's concept only. Prices and specifications subject to change without notice. E.80 E, September 2020.



1 Bed  
 1 Bath  
 565 SqFt

**1G**

# 1 M + D

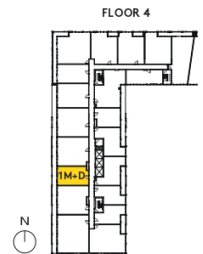
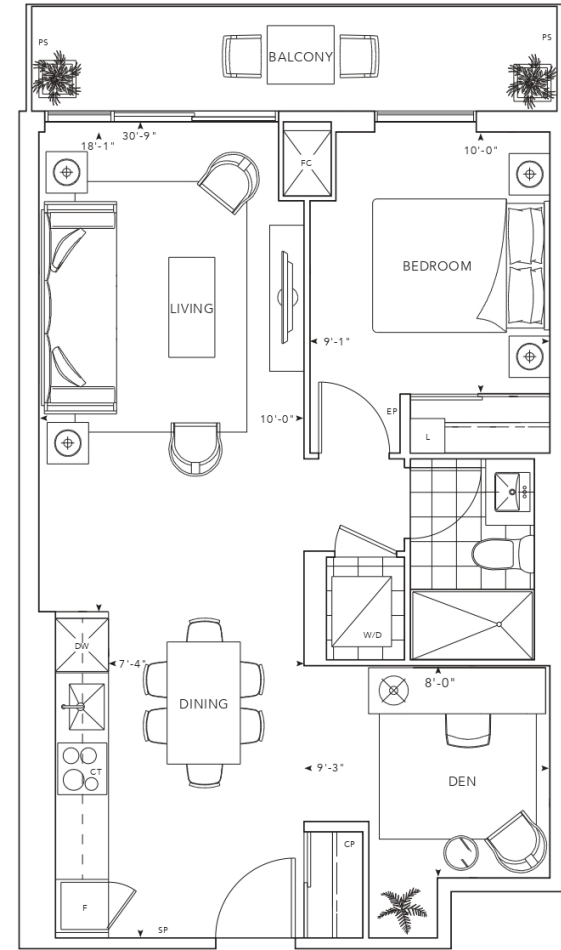
**623 SQ.FT.**

**1 Bedroom + Den**

**1 Bathroom**

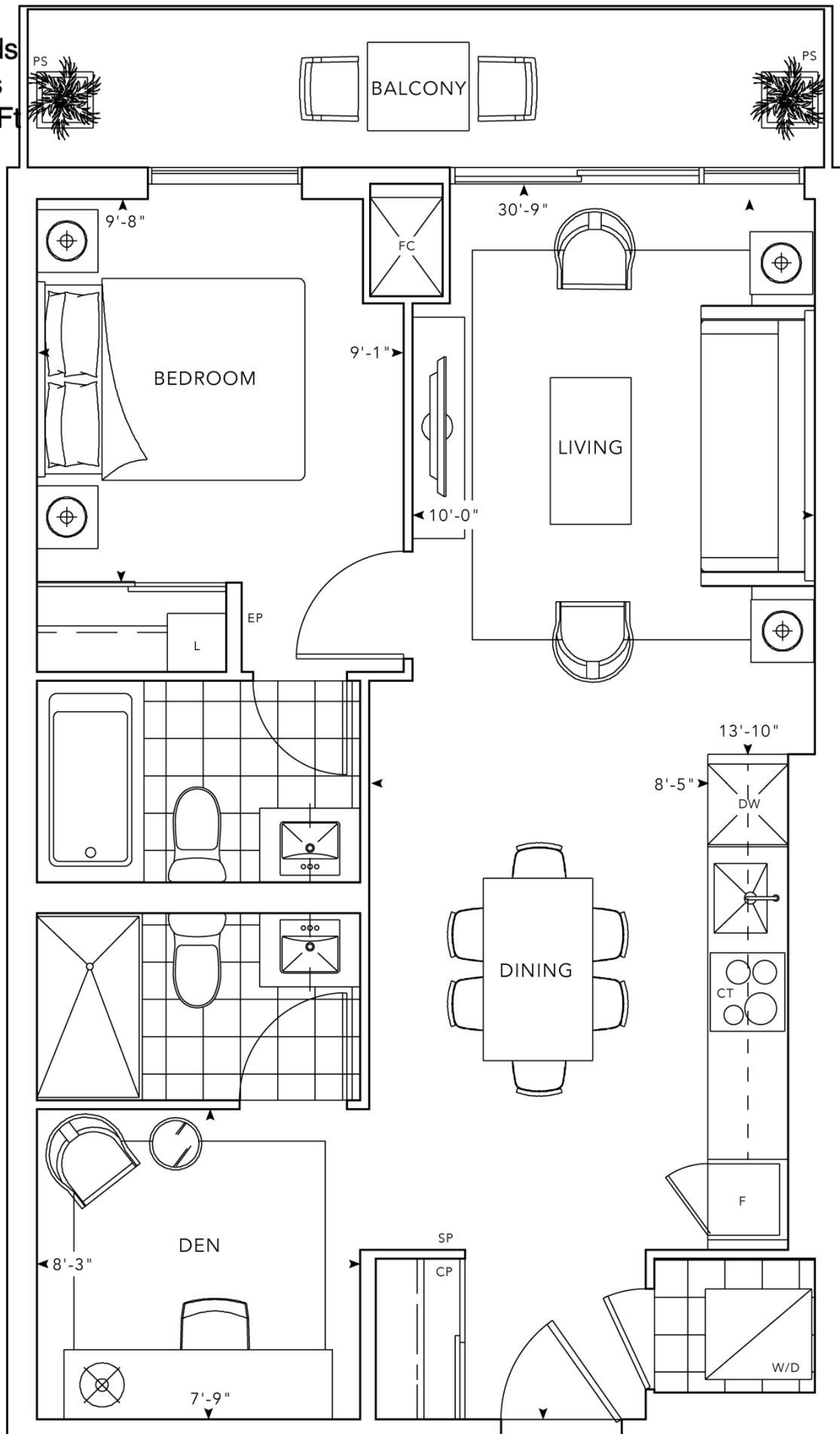
**FLOORS 4 - 7**

**VIEW West**

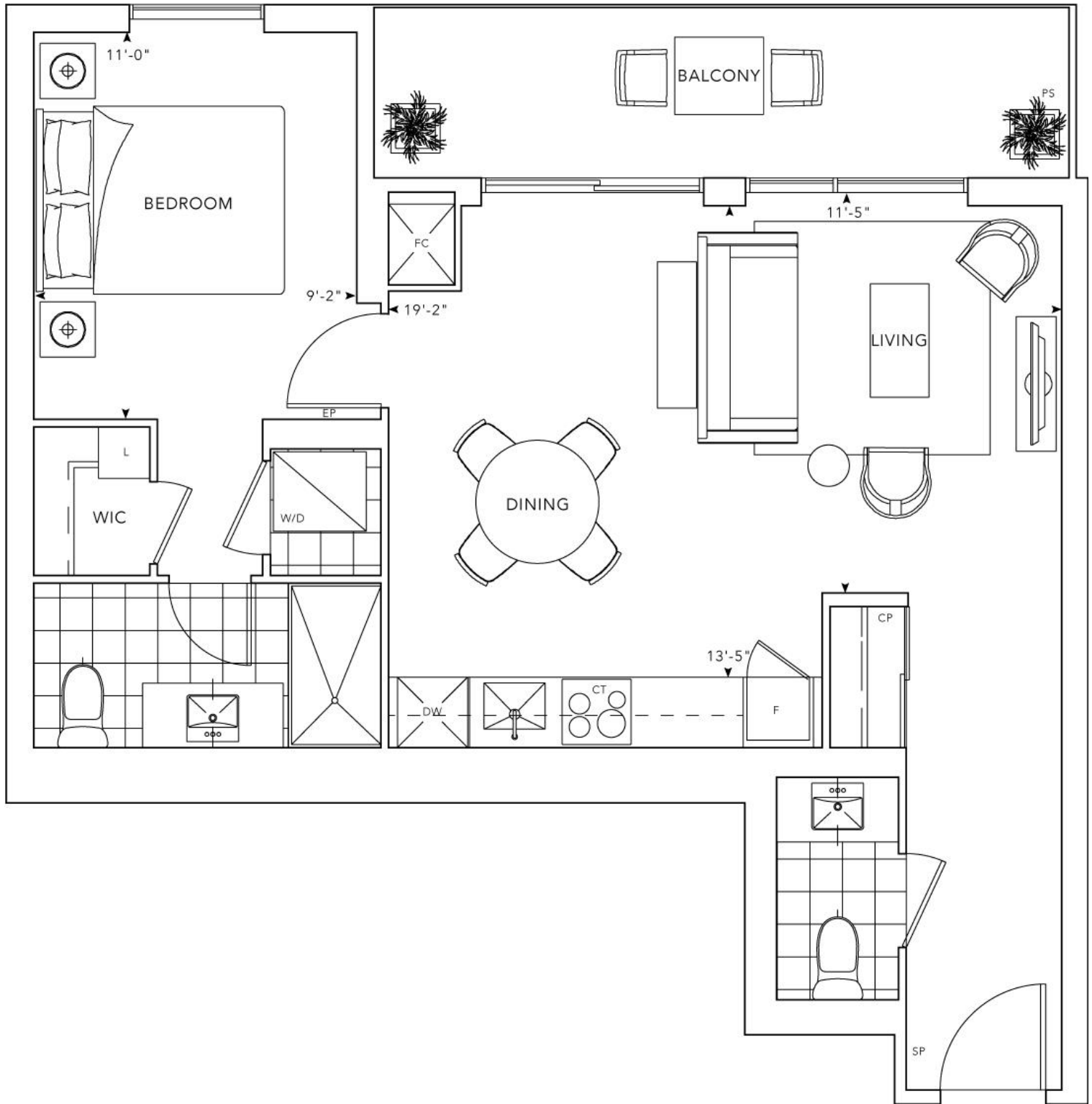


1.5 Beds  
2 Baths  
632 SqFt

1  
P  
+  
D



**1S** 1 Bed  
1 Bath  
660 SqFt



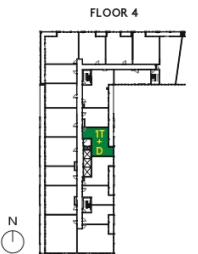
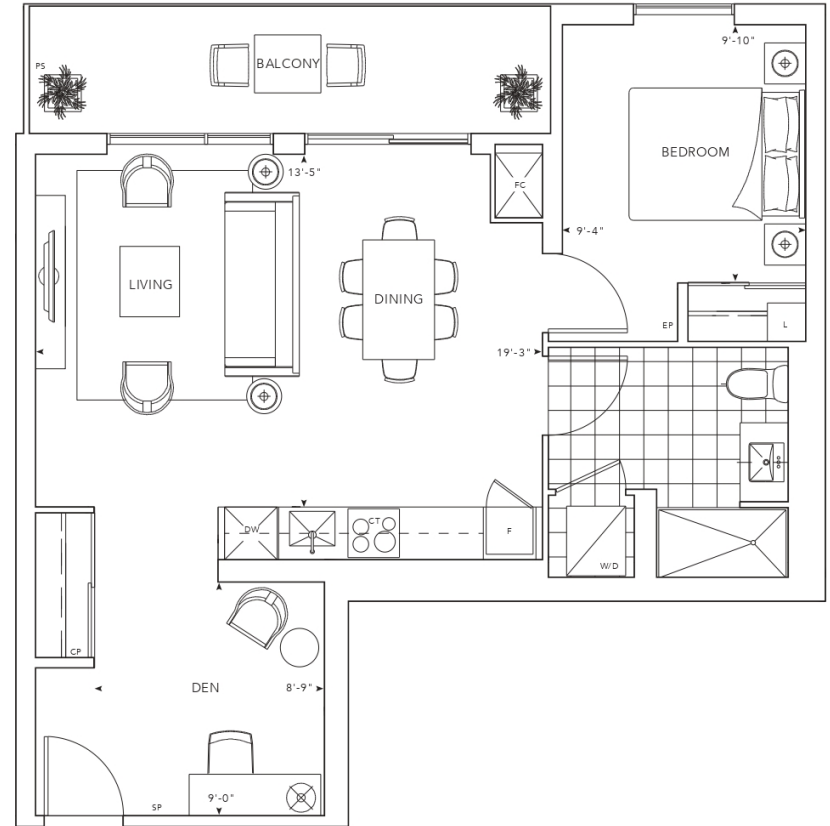
# 1 T + D

**692 SQ.FT.**

**1 Bedroom + Den  
1 Bathroom**

**FLOORS 4 - 7**

**VIEW East**



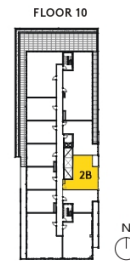
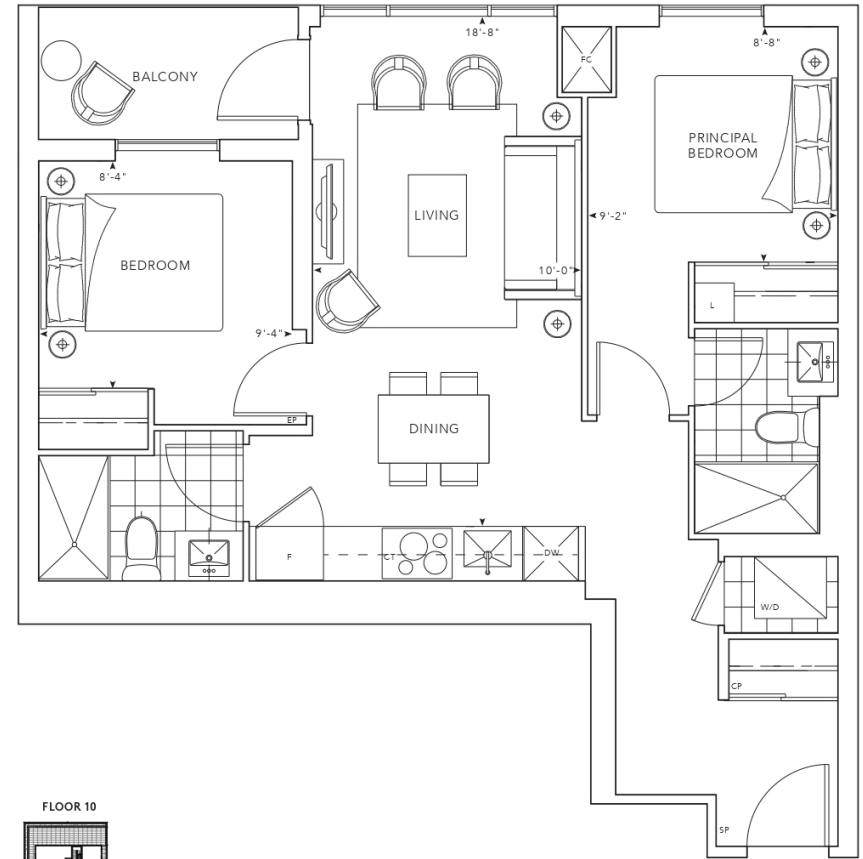
©Tritel 2020. "Tritel", "T" design, "Tritel Built for Life" and "Tritel Built for Life Design" are registered trademarks of Tritel Corporation. Project names and logos are Trademarks of their respective owners. All rights reserved. Buildings and views not to scale. All dimensions are approximate and subject to normal construction variances. Dimensions may exceed the usable floor area. Sites and specifications subject to change without notice. Actual usable floor space may vary from the stated floor area. Furniture is displayed for illustration purposes only and does not necessarily reflect the electrical plan for the suite. Suites are sold unfurnished. Balcony venice and facade variations may apply. Contact a sales representative for further details. Illustrations are an artist's concept only. Prices and specifications subject to change without notice. E.80 E. 5 September 2020.

# 2 B —

**704 SQ.FT.**  
2 Bedrooms  
2 Bathrooms

**FLOORS 10 - 12, PH**

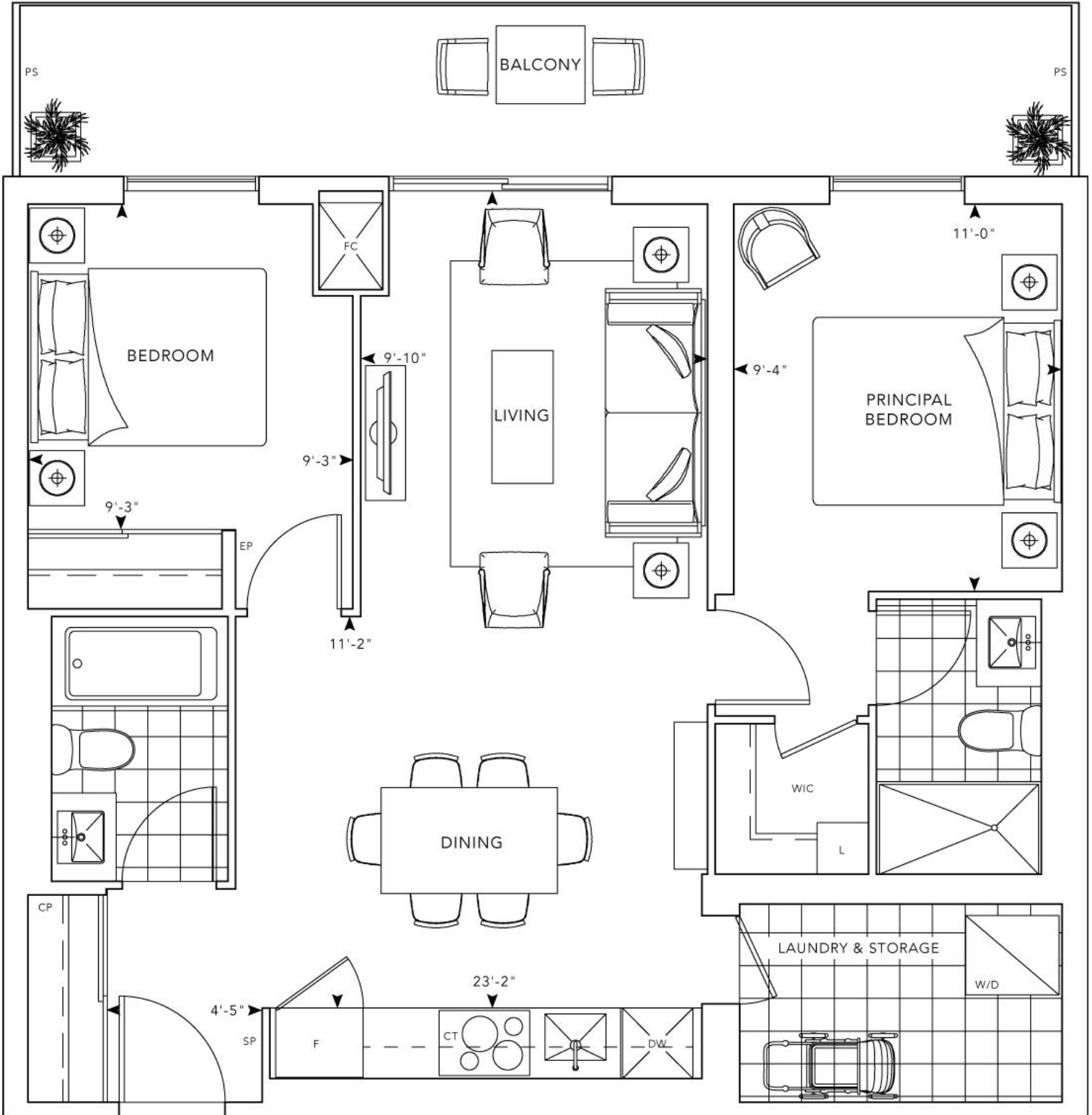
**VIEW East**



©Tritel 2020. All rights reserved. Tritel, Tritel Built for Life and Tritel Built for Life Design are registered trademarks of Tritel Corporation. Project names and logos are trademarks of their respective owners. All rights reserved. Buildings and views not to scale. All dimensions are approximate and subject to normal construction variances. Dimensions may exceed the usable floor area. Sales and specifications subject to change without notice. Actual usable floor space may vary from the stated floor area. Furniture is displayed for illustration purposes only and does not necessarily reflect the electrical plan for the suite. Suites are sold unfurnished. Balcony fence and facade variations may apply. Contact a sales representative for further details. Illustrations are an artist's concept only. Prices and specifications subject to change without notice. E.80 E. September 2020.

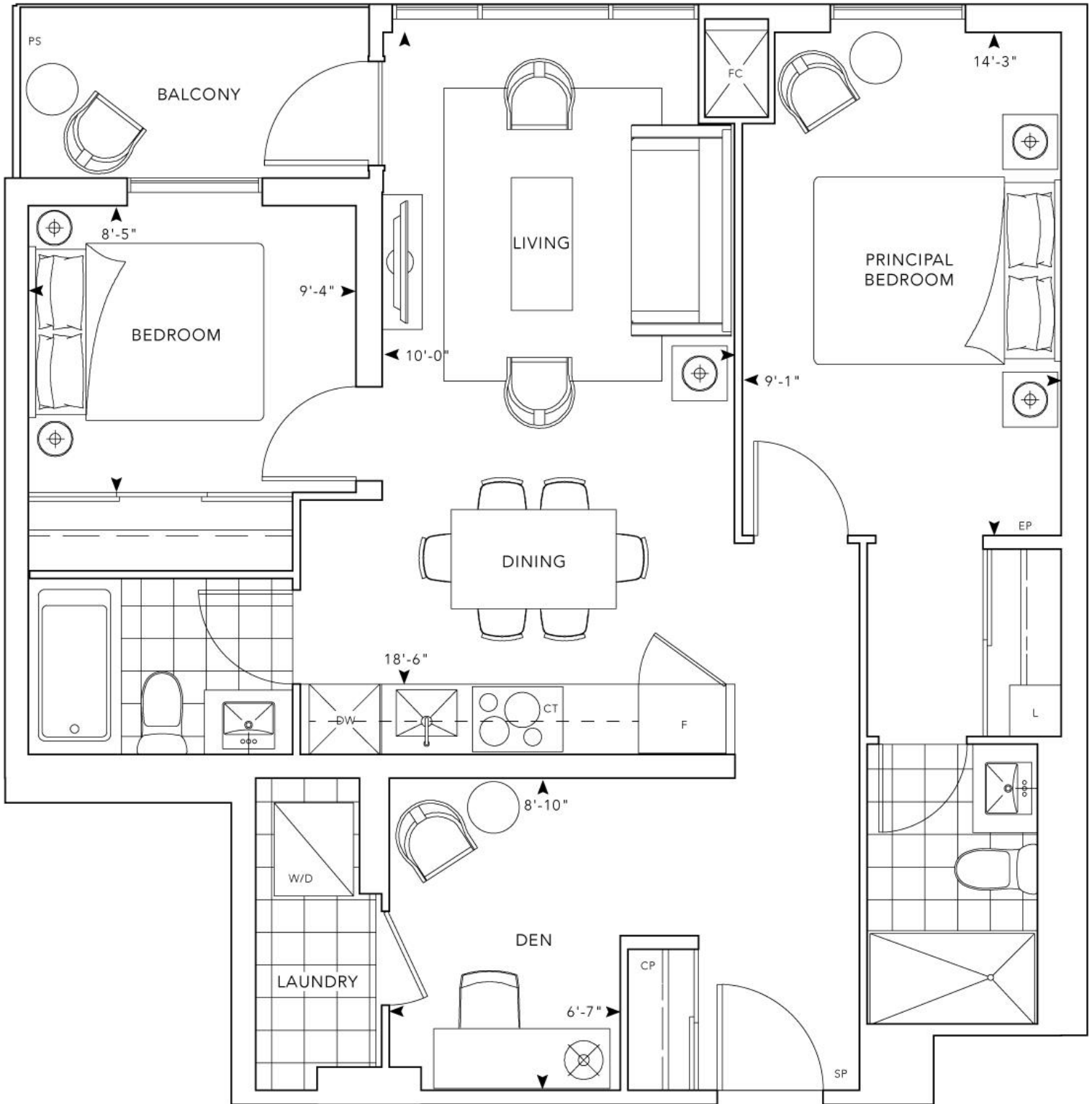


**2F** 2 Beds  
2 Baths  
793 SqFt



# 2H+D

2.5 Beds  
2 Baths  
838 SqFt

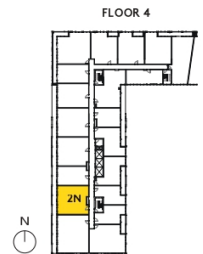
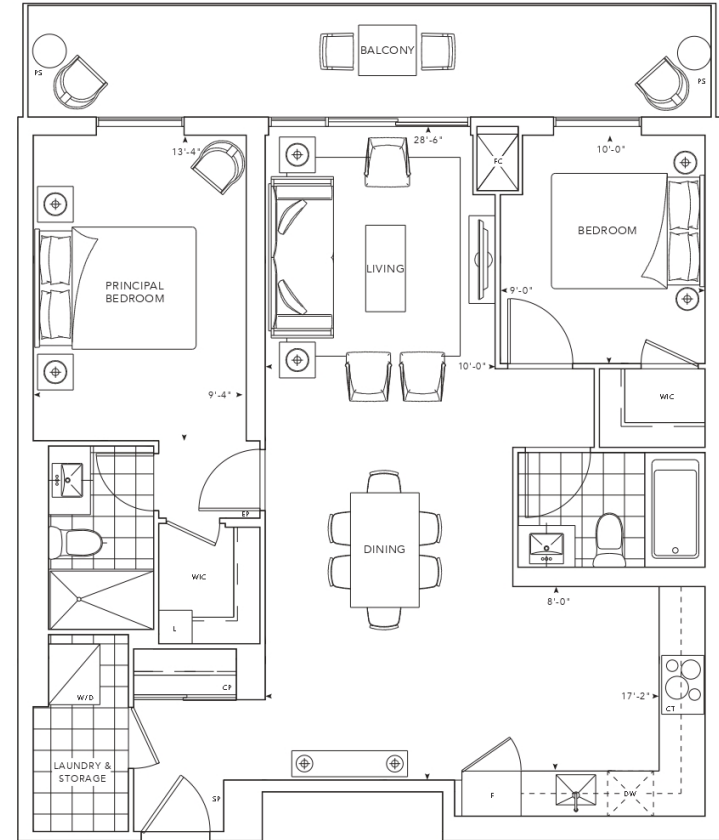


# 2 N

**930 SQ.FT.**  
2 Bedrooms  
2 Bathrooms

**FLOORS 4 - 7**

**VIEW West**



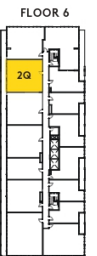
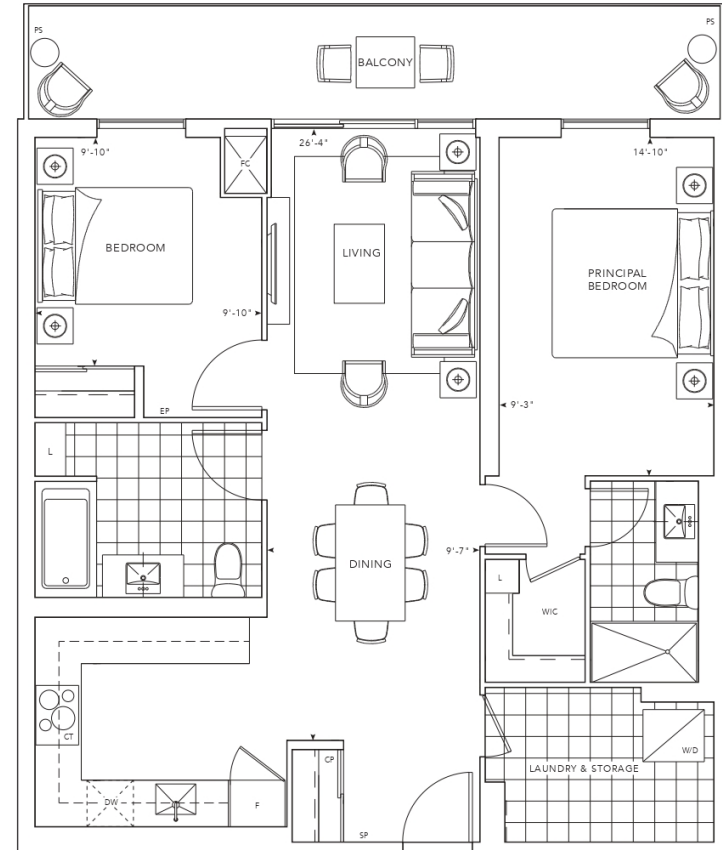
©Tritel 2020. "Tritel", "T" design, "Tritel Built for Life" and "Tritel Built for Life Design" are registered trademarks of Tritel Corporation. Project names and logos are trademarks of their respective owners. All rights reserved. Buildings and views not to scale. All dimensions are approximate and subject to normal construction variances. Dimensions may exceed the usable floor area. Sites and specifications subject to change without notice. Actual usable floor space may vary from the stated floor area. Furniture is displayed for illustration purposes only and does not necessarily reflect the electrical plan for the suite. Suites are sold unfurnished. Balcony, verandah and facade variations may apply. Contact a sales representative for further details. Illustrations are artist's concept only. Prices and specifications subject to change without notice. E.80 E. September 2020.

# 2Q1

**948 SQ.FT.**  
2 Bedrooms  
2 Bathrooms

**FLOORS 6 - 9**

**VIEW West**



©Tridel 2020. "Tridel," "Tridel Built for Life and Tridel Built for Life Design" are registered trademarks of Tridel Corporation. Project names and logos are trademarks of their respective owners. All rights reserved. Buildings and views not to scale. All dimensions are approximate and subject to normal construction variances. Dimensions may exceed the usable floor area. Sites and specifications subject to change without notice. Actual usable floor space may vary from the stated floor area. Furniture is displayed for illustration purposes only and does not necessarily reflect the electrical plan for the suite. Suites are sold unfurnished. Balcony venetian and façade variations may apply. Contact a sales representative for further details. Illustrations are an artist's concept only. Prices and specifications subject to change without notice. E.83 E. 5 September 2020.

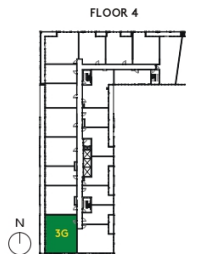
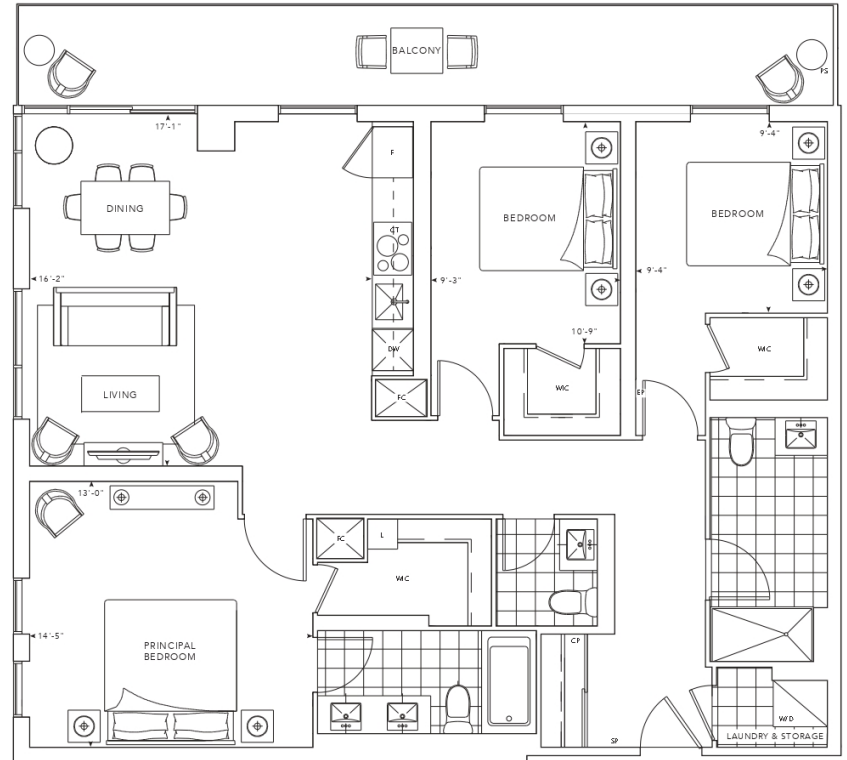
# 3 G

**1,270 SQ.FT.**

**3 Bedroom  
2.5 Bathroom**

**FLOORS 4 - 7**

**VIEW South + West**



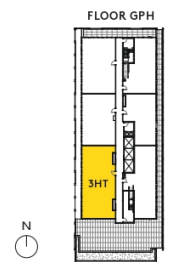
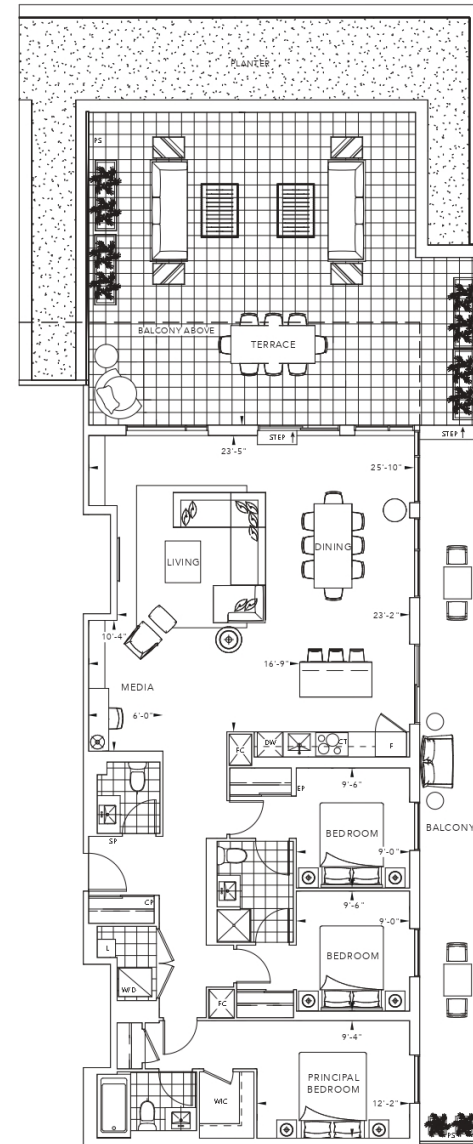
©Triebel 2020. "Triebel," "Triebel Built for Life" and "Triebel Built for Life Design" are registered Trademarks of Triebel Corporation. Project names and logos are Trademarks of their respective owners. All rights reserved. Buildings and views not to scale. All dimensions are approximate and subject to normal construction variances. Dimensions may exceed the usable floor area. Sites and specifications subject to change without notice. Actual usable floor space may vary from the stated floor area. Furniture is displayed for illustration purposes only and does not necessarily reflect the electrical plan for the suite. Suites are sold unfurnished. Basic only. Site and facade variations may apply. Contact a sales representative for further details. Illustrations are an artist's concept only. Prices and specifications subject to change without notice. E.80 E. 5 September 2020.

# 3HT

**1,475 SQ.FT.**  
**3 Bedrooms**  
**2.5 Bathrooms**

**FLOOR GPH**

**VIEW South + West**



©Tritel 2020. "Tritel", "T" design, "Tritel Built for Life" and "Tritel Built for Life Design" are registered trademarks of Tritel Corporation. Project names and logos are trademarks of their respective owners. All rights reserved. Buildings and views not to scale. All dimensions are approximate and subject to normal construction variances. Dimensions may exceed the usable floor area. Sites and specifications subject to change without notice. Actual usable floor space may vary from the stated floor area. Furniture is displayed for illustration purposes only and does not necessarily reflect the electrical plan for the suite. Suites are sold unfurnished. Balcony fence and façade variations may apply. Contact a sales representative for further details. Illustrations are an artist's concept only. Prices and specifications subject to change without notice. E.80 E, September 2020.